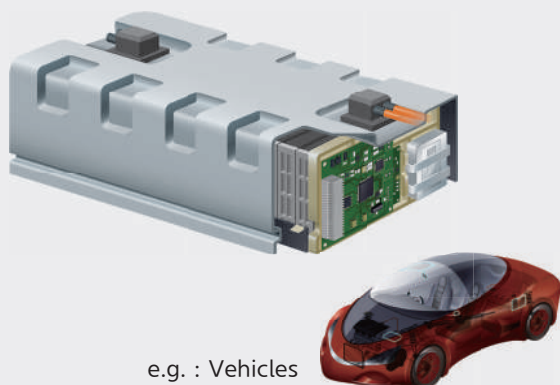


Electrode Paste

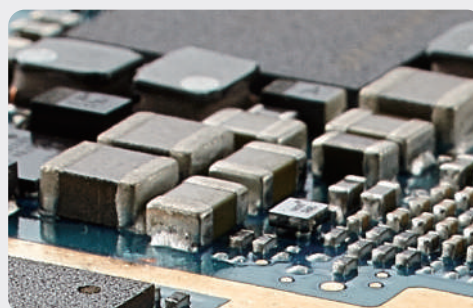
Over 15-year experience of resin formulated conductive paste

Applications

Industrial/ automotive electronic components



Ceramic capacitors



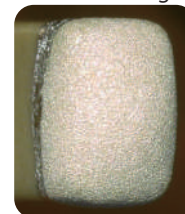
Features

- Silver coated copper particles replaceable to silver
- Excellent self-leveling after deposition
- Stress absorption

Before curing



After curing



Product line-up & properties

Product			NE180	SAP150
Type			Thermo-plastic	Thermo-setting
Filler	Conductive particles		Silver coated copper	
	Average particle size	μm	8 - 10	4 - 6
Binder	Resin		Epoxy	Phenolic
Solvent			Butyl carbitol	
Filling ratio		wt%	90	85
Viscosity	BH type	dPa·s	70 - 90	70 - 100
Density		g/cm ³	2.4 - 2.6	3.0 - 3.4
Curing(drying) conditions			160°C × 30min.	170°C × 30min.
Volume resistivity(Representative value)		Ω·cm	1.0 - 2.0E-04	
Shelf-life	0 - 10°C	month(s)	4.0	

